



WWW.REDI-ROCK.COM

A New Look: Redi-Rock LedgeStone face gives retaining walls an unparalleled natural look. From the innovators at Redi-Rock comes an entirely new face for the massive Redi-Rock blocks you've come to know and trust. Please call your local manufacturer for regional colors.

LEDGESTONE

THE NEWEST TEXTURE
IN THE REDI-ROCK
FAMILY OF PRODUCTS

The Challenge

You need a structural retaining wall, but you also need a wall that looks good. For the past ten years, Redi-Rock's Limestone and Cobblestone faces have led the industry in "The Essence of Natural Rock" look. Now, we're taking it one step further with the game-changing Redi-Rock LedgeStone face.

The Solution

The LedgeStone face creates texture and gives walls a random, natural look. The texture on each block makes individual blocks nearly indistinguishable, giving the impression of a natural, random stone wall. Featuring integral, rich coloring, LedgeStone is like nothing else available on the market today.

Redi-Rock LedgeStone is the perfect solution for projects that need to look good. Structurally, Redi-Rock LedgeStone blocks are the same as Redi-Rock blocks you have worked with in the past—the same massive dimensions, quality and ease of installation you've come to expect. At one ton each, you can build tall gravity walls using LedgeStone, and even taller walls with reinforcement.

Contact your local Redi-Rock manufacturer or visit www.redi-rock.com to learn more about the Redi-Rock LedgeStone face today!

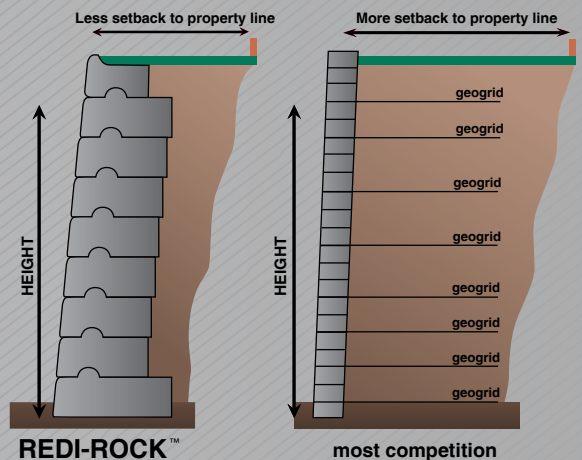
WWW.REDI-ROCK.COM

MIDDLE BLOCK



Weight: 2400 lbs.
46" x 41" x 18" High
5.75 sq. ft. of face

NO GEOGRID OR TIE-BACKS IN MANY APPLICATIONS

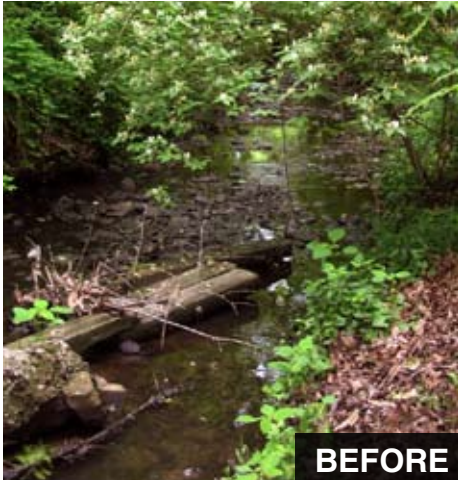


Redi-Rock blocks harness the power of gravity. Smaller block systems require time-consuming and costly reinforcement to reach the same heights.

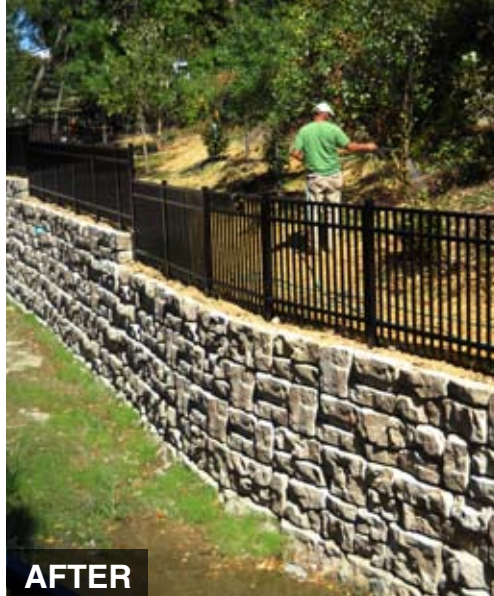
The Redi-Rock logo, featuring the brand name in white, bold, sans-serif font on a red rectangular background.

LEDGESTONE

CITY CHOOSES
REDI-ROCK LEDGESTONE
FOR AESTHETIC
GRAVITY SOLUTION



BEFORE



AFTER



AFTER

The Challenge

When a sharp turn in a stream began eroding homeowners' yards, this city needed a solution, and fast.

The proposed storm channel required 13-14 ft. high walls, so minimizing excavation in residents' yards was important. Aesthetics and cost also played a role in the city's search for a solution.

The Solution

"The ability to construct the wall without geogrid reinforcement was critically important to

this project," explained the P.E. who designed the project. The city manager added, "We chose Redi-Rock because we had more finish options, including the new LedgeStone face. Plus, it was very economical."

Redi-Rock's massive, one-ton blocks stacked like giant Legos to harness the power of **gravity** in this project. The 13.5 ft. high walls did not require any reinforcement, which cut down on excavation time and costs considerably.

Each LedgeStone block has a random pattern which made individual blocks in the wall

nearly indistinguishable. The LedgeStone texture also blended in with the native rock in the area, and the precast concrete was colored to give the walls an incredibly **natural finish**.

In total, the 4,800 sq. ft. walls took less than two weeks to install, and the community couldn't be happier with the new storm channel.

Contact your local Redi-Rock manufacturer or visit www.redi-rock.com to learn more about the Redi-Rock LedgeStone face today!

MORE TEXTURES FROM REDI-ROCK



COBBLESTONE



LIMESTONE

Call your sales representative for more information on available products and regional colors.

WWW.REDI-ROCK.COM